



LEHNER®

Streuen & Dosieren mit 12 Volt

Drive

12V

Spreading width



2–24 m

Examination
according to
**JKI RiLi
3-1.0**

Warning



Signal

Control panel



LAS 4

OPTIONAL

**AUTO-
DOSIS**



Videos



AGRICULTURAL MACHINERY

SuperVario®

The versatile 12 V universal spreader with infinitely adjustable working width from 2 – 24 m for grass, catch and cover crops, slug pellets and other granular materials.

SAVE TIME. PERFECT DOSING. TARGETED SPREADING – SuperVario®

The SuperVario® from LEHNER is a universal spreader for use in agriculture, with a 12 V drive for operation independent of other drives, such as the cardan shaft or hydraulics. This way, two work operations can frequently be combined into one, achieving long-term savings in cost and time. The working width can be flexibly adjusted from 2 – 24 m by infinitely adjusting the speed of the SuperVario® spreading disc between 200 and 3000 rpm – all in comfort from the cab. In addition, the control panel comes with various monitoring features as standard, such as an empty indicator, automatic valve monitoring, etc.

The SuperVario® has even more to offer, including:

- Robust 12 V electric motor (300 W)
- Hopper (in 3 sizes) with relief roof and discharge spout for convenient and thorough residue emptying
- Valve and spreading disc of non-rusting stainless steel
- Control panel with 2-line graphic display (as standard) for stepless dosage control
- Visual and acoustic fault indication on the control panel
- 10-time autostart for agglomerated spreading material
- Infinitely adjustable distributor blades for adjusting the spreading pattern – sideways spreading
- Readiness (socket) for headland management available as standard
- Tool-free hopper attachment/removal
- Water-tight junction box
- Device control according to JKI RiLi 3-1.0 incl. test seal and test report

- Spreading cover crops with the adjustable baffle plate mounted on a disc harrow



Working widths based on material:

Catch/cover crops:	2.5 – 15 m
Grass: *coated grass seed	2.0 – 6 (10*) m
Slug pellets:	3.0 – 24 m
Silage additives: A stainless steel frame is recommended for corrosive silage additives	1.5 – 4 m

For further information visit: www.lehner.eu

SuperVario® TECHNICAL DATA



Hopper capacity (litres)	70 l	110 l	170 l
Dimensions (LxWxH) in mm	490x585x745	490x585x920	690x610x970
Weight	22 kg	31 kg	33 kg
Motor power / fuse	300 W / 25 A		
Power consumption	When starting, up to 24 A, normal operation up to 15 A		
Operating temp. / storage temp.	-10 to +70 °C / -30 to +70 °C		
Battery cable / control cable	5 m – 4.0 mm ² / 6 m – fixed connection to spreader, cable to control panel		
Connections	Power supply, control cable, headland management socket		
Spreading width	Stepless from 2 – 24 m		



One-sided sowing of cover crops while ploughing

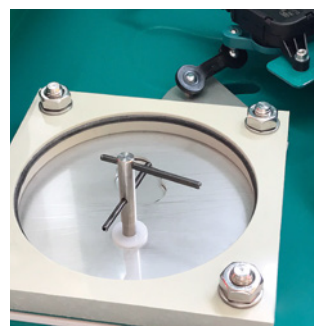
Reseeding grass in combination with a roller

Spreading cover crops on a cultivator

Spreading with comfort and convenience – the LAS4 control panel with empty indicator:



As well as setting the working width by infinitely adjusting the rotational speed of the spreading disc, all other switching functions are also controlled via the control panel. These include On/Off, setting the adjustment valve for spreading dosage, checking the voltage, etc. What's more, the control panel issues a visual and acoustic warning when the hopper level is down to minimum or the valve is not in position. Enjoy even greater convenience with speed-dependent dosage via the AUTO-DOSIS control unit (see overleaf).



The vital difference

The valve and spreading disc are made of non-rusting stainless steel (stainless steel frame available at additional cost). The agitator can be equipped with an agitator finger (included) especially for sowing grass seed.



Flexible & sturdy in the field

With its 12 V technology and extensive range of attachments, the SuperVario® can be installed on virtually any agricultural vehicle, e.g. ATV, pick-up, etc.

OPTIONAL: Speed-dependent dosing with AUTO-DOSIS



The menu of the AUTO-DOSIS control unit contains 12 spreading charts from the manufacturer. The manufacturer can install further spreading charts if required. You can find a list of available spreading charts in the "Downloads" section of our homepage at www.lehner.eu

AUTO-DOSIS automatically adjusts the valve position in line with the driving speed.

After you have selected the material, entered the desired spreading width and discharge rate per hectare, the AUTO-DOSIS automatically reacts to braking and acceleration manoeuvres and controls the dosing valve, keeping the discharge rate kg/ha constant.

1. AUTO-DOSIS via 7-pin signal socket

Here, the travel speed is recorded via the 7-pin signal socket on the tractor. In this version, the signal socket also provides the headland management system.

2. AUTO-DOSIS via GPS receiver

The speed is determined by GPS and forwarded to the control panel.



7-pin headland management cable (accessory)



GPS receiver (accessory)

ACCESSORIES:

You can find further brackets and all accessories for the SuperVario® at www.lehner.eu



Triangular bracket for spreaders for tool-free installation on the vehicle's Accord or three-point top link.



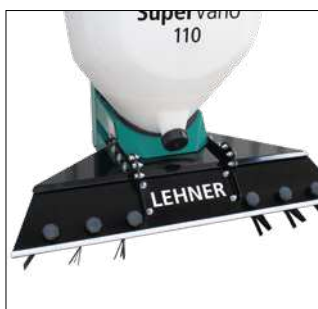
Cultivator bracket for triangular – for convenient mounting in combination with the three-point top link attachment.



Standard cultivator bracket – for securing the SuperVario® spreader to a soil cultivator.



Three-Point-Frame CAT 0, CAT I, CAT II for attaching to the top and bottom links of the hydraulics (front or rear installation).



Baffle plate with adjustable angle of inclination for discharging catch and cover crops with precision between the grubber and roller.



Deflector plate for "ploughing, adjustable to the right" – for one-sided spreading of catch and cover crops on ploughed fields.



7-pin signal socket for headland management – automatic valve control when lowering and lifting the hydraulics.



Headland management system with hydraulic sensor and magnet for tractors without 7-pin headland management signal socket.



LEHNER®
Streuen & Dosieren mit 12 Volt